

# 设备简介

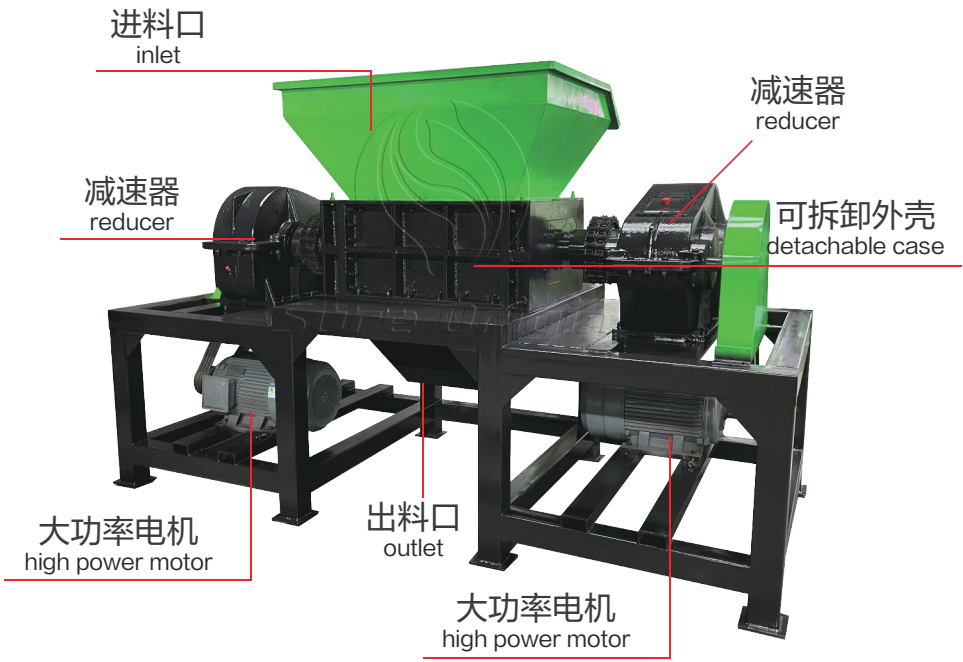
## Equipment introduction

双轴撕碎机是由两条撕碎刀轴互相滚动剪切撕碎原理，实现对物料的处理。

主要应用于废旧橡胶轮胎、废旧汽车、化工塑料桶、废旧家电、电路板、混合轻工业废料，轻建筑垃圾、医疗垃圾、集装箱托盘、废旧电线电缆、大型动物骨头的破碎。

The double-shaft shredder is based on the principle of two shredding knife shafts rolling and shearing each other to realize the processing of materials.

It is mainly used in the crushing of waste rubber tires, waste cars, chemical plastic barrels, waste household appliances, circuit boards, mixed light industrial waste, light construction waste, medical waste, container pallets, waste wires and cables, and large animal bones.



双轴粉碎机工作原理：

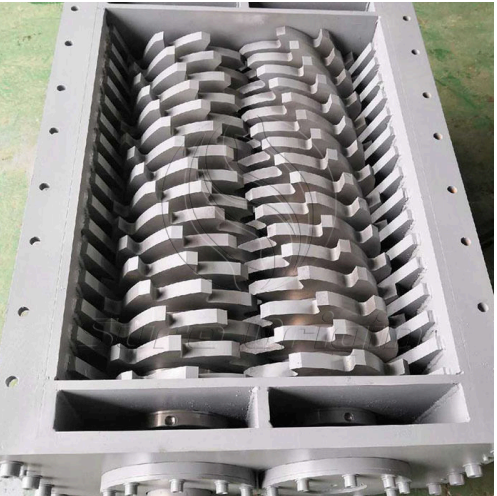
- 1.进料漏斗：将待粉碎的材料放入，以防止材料溅出；
- 2.双轴切割系统：根据客户的材料使用不同的刀片；
- 3.动力系统：我们选择中国知名品牌的电机，也可以根据客户需求进行配置；
- 4.卸料输送系统：采用独立的动力系统，并且该动力系统通过螺栓固定在粉碎机上，使动力系统可以整体抽出。

Double Shafts Shredder Working Principle:

- 1.Feeding hopper:Put the material to be shredded,so as to prevent the material from splashing out;
- 2.Double shafts cutting system:Using different blades according to customer's material;
- 3.Power system:We choose the famous brand of motor in China,can also be configured according to customer need;
- 4.Discharging conveyor system:It adopts independent power system,and that power system is integrally fixed on the shredder by bolts,so that the power system can be integrally drawn out.

# 产品构造

## Product structure



撕碎机箱体  
Shred machine box



刀轴  
Knife axis



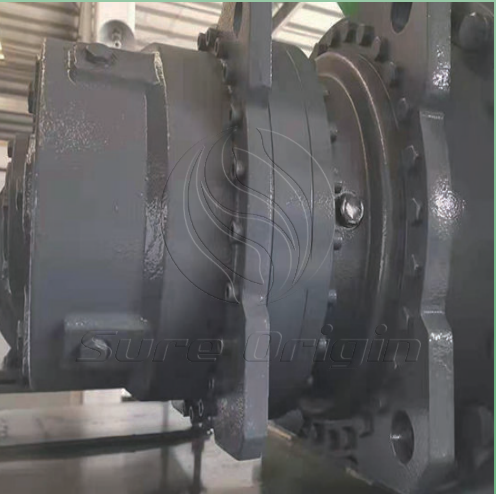
轴承座  
Bearing seat



PLC 电控  
PLC motor control



电机  
Motor



减速机  
reducer

# 设备参数

## Product advantages

| 型号<br>Model | 外部尺寸<br>External<br>dimension<br>( m ) | 产量<br>Capacity<br>( kg/h ) | 功率<br>Power<br>( kw ) | 重量<br>Weight<br>( kg ) |
|-------------|--|----------------------------|-----------------------|------------------------|
| TM-600      | 2*1.2*1.6                              | 1000                       | 18.5                  | 2000                   |
| TM-800      | 2.5*1.35*1.8                           | 1000-2000                  | 18.5*2                | 3800-4000              |
| TM-1000     | 3.3*1.9*2.2                            | 3000                       | 30*2                  | 5200                   |
| TM-1200     | 3.6*2*2.2                              | 4000-5000                  | 37*2                  | 6400                   |

# 设备现场

## Equipment site





## 郑州朔源环保科技有限公司

Zhengzhou Sure Origin Environmental Protection Technology Co.,Ltd

郑州朔源环保科技有限公司是集设计、制造、国内外销售为一体的设备制造企业。

公司生产销售环保型铜米机,水洗铜米机,撕碎机,电路板回收设备,散热器,电机拆解机器,鳄鱼剪切机,铜铝水箱破碎分离机,金属破碎机,高压静电分离机,铝塑复合材料磨粉机等.目前公司产品已经出口到美国,法国,德国,瑞士等60多个海内外国家和地区,产品获得欧盟认证和国内外广大用户的认可和好评。

公司总部位于荥阳市,欢迎广大新老客户洽谈咨询,工厂参观,免费测试机器。

Zhengzhou Sure Origin Environmental Protection Technology Co.,Ltd is a machine manufacturer in China, we focus on recycling machine design, research and innovation.  
Our main business scope: manufacture recycling plants for waste lithium battery, cable wire, PCB, copper aluminum radiator, mixed plastic waste medical blister pack etc.

Welcome to visit our factory and test our machines.



☎ 152-0518-2238

📍 河南省荥阳市 Zhengzhou City, Henan China



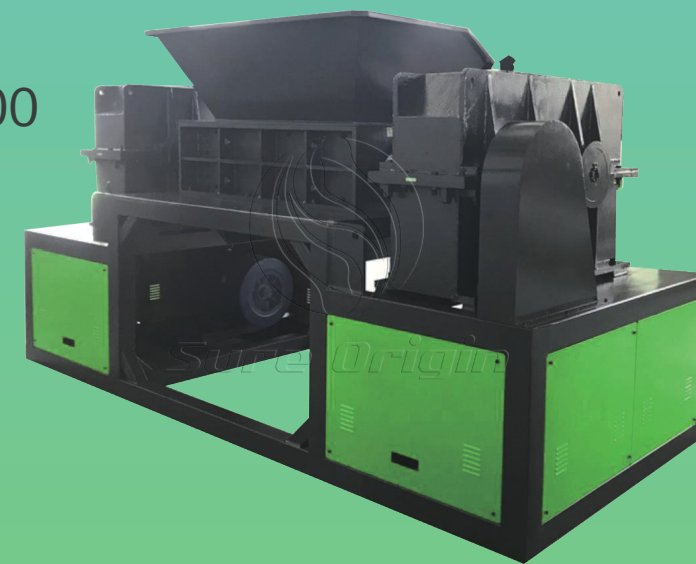
🌐 [www.sureoriginrecycling.com](http://www.sureoriginrecycling.com)  
[www.recyclesorigin.com](http://www.recyclesorigin.com)

## 热销机型

Hot sale



TM-600  
(1000kg/h)



TM-1000  
(3000kg/h)



TM-800  
(1000~2000kg/h)

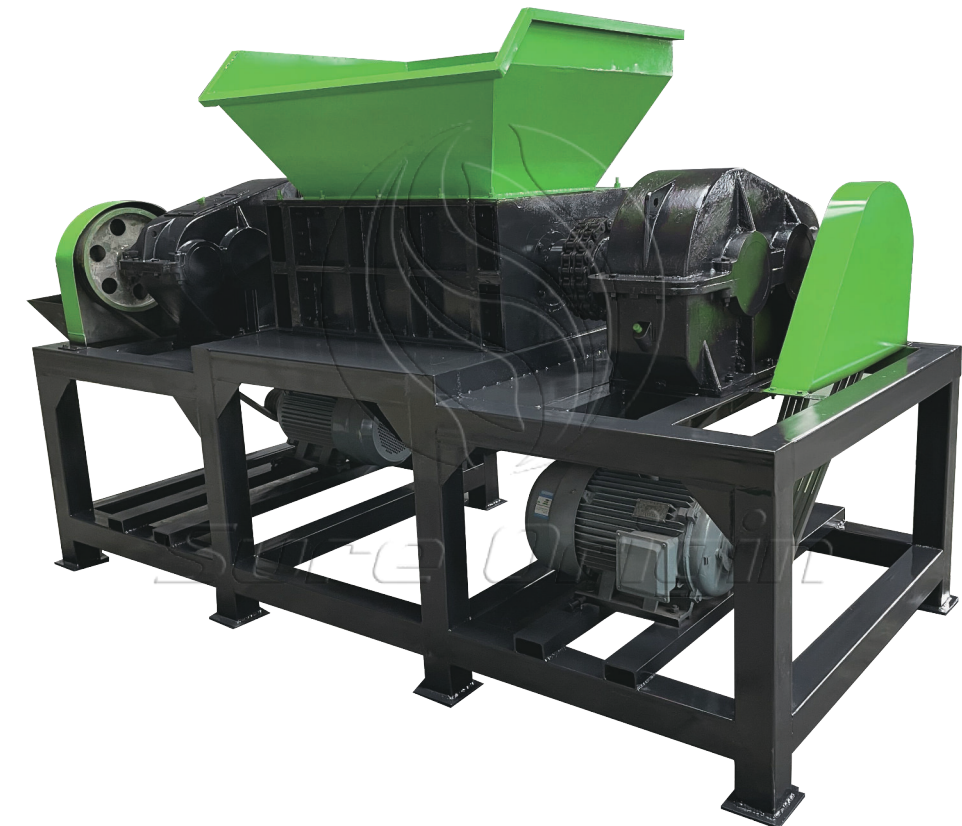


TM-1200  
(4000~5000kg/h)



**Sure Origin**

固废回收再利用处理设备专家  
Expert in solid waste recycling and reuse processing equipment



最专业严谨的技术支持  
YOUR SUCCESS IS OUR BEST SERVICE

为您的成功保驾护航  
MORE THAN 50 COUNTRIES AND AREA